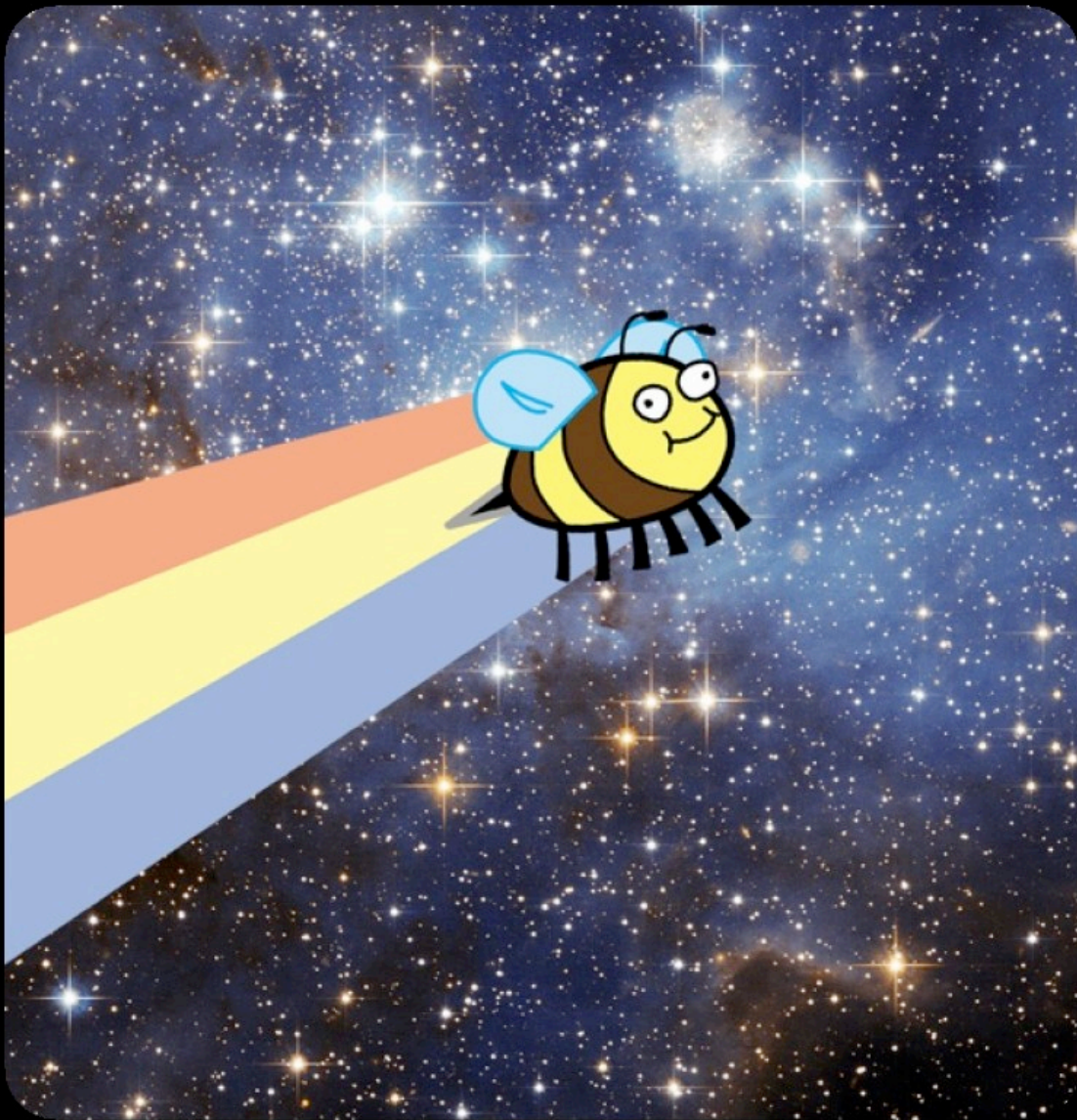


**game program™**

# **SUPER FUN BEE ASSAULT PARTY**

**Use with Keyboard Controllers**



**Program & Audiovisual © 2009 Dalmation Entertainment  
Presented by Gamma Prime Games**

# FUN! FUN! SUPER FUN BEE ASSAULT PARTY!

Welcome to FUN! FUN! SUPER FUN BEE ASSAULT PARTY!, the funtacular new game from Dalmation Entertainment and Gamma Prime. What you have obtained is a fantastic experience in which you play the bee, Bee, who's mission is to find the best game ever by fighting his way through enemies and the most diabolical boss of all. What could it be? Why the worst nemesis to all of gaming... you'll only find out if you can survive the onslaught to the boss's domain...

## CONTROL! CONTROL! HOW TO PLAY THE GAME!

There is only one way to play this game... not with a joystick... not with your mind... and not with a remote. You play this game using the keyboard (or a controller!). Which keys you ask? These keys:

ARROWS - Move Bee around the screen

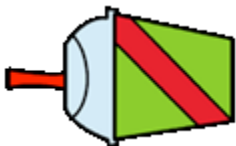
Z/Any Button - Fire Bee's Super Stingers

Simple, yes? Or perhaps the most confusing controls you have ever confronted. It takes a child to play it, but a master to master it. But how will you know what your controls are controlling? Here's what's what.



### BEE

This is Bee. This is you. You are Bee. Bee is you



### ENEMY

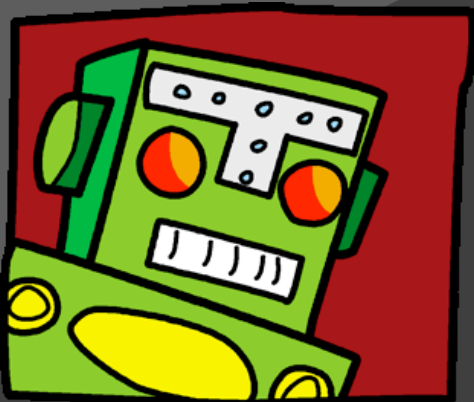
This is the enemy. Stay out of the enemy. If you are in the enemy, something is horribly, horribly wrong. So you must persevere and destroy it. You are Bee.



DALMATION  
ENTERTAINMENT



GAMMA PRIME GAMES



DESTRUCTOID

RETROFORCE GO!

